

CT-S280/PMU2xxx/BD2-222x

USB Interface Model

Virtual COM Driver Installation Guide

Rev 2

CITIZEN SYSTEMS JAPAN CO., LTD.

6-1-12, Tanashi-cho, Nishi-Tokyo-shi

Tokyo 188-8511 JAPAN

Tel: +81-424-68-4993

Fax: +81-424-68-4997

1. Introduction

This document provides instructions to install the driver for CT-280/PMU2xxx/BS2-222x with USB interface.

Be sure to read this guide before using your printer.

2. Precautions

- Read through the precautions given in the operation manual supplied with your printer beforehand.
- Missing of data or program caused by the use of this product is not covered under our warranty.

Before using data or program, you are requested to take countermeasure such as taking backup copy.

3. Operating Environment

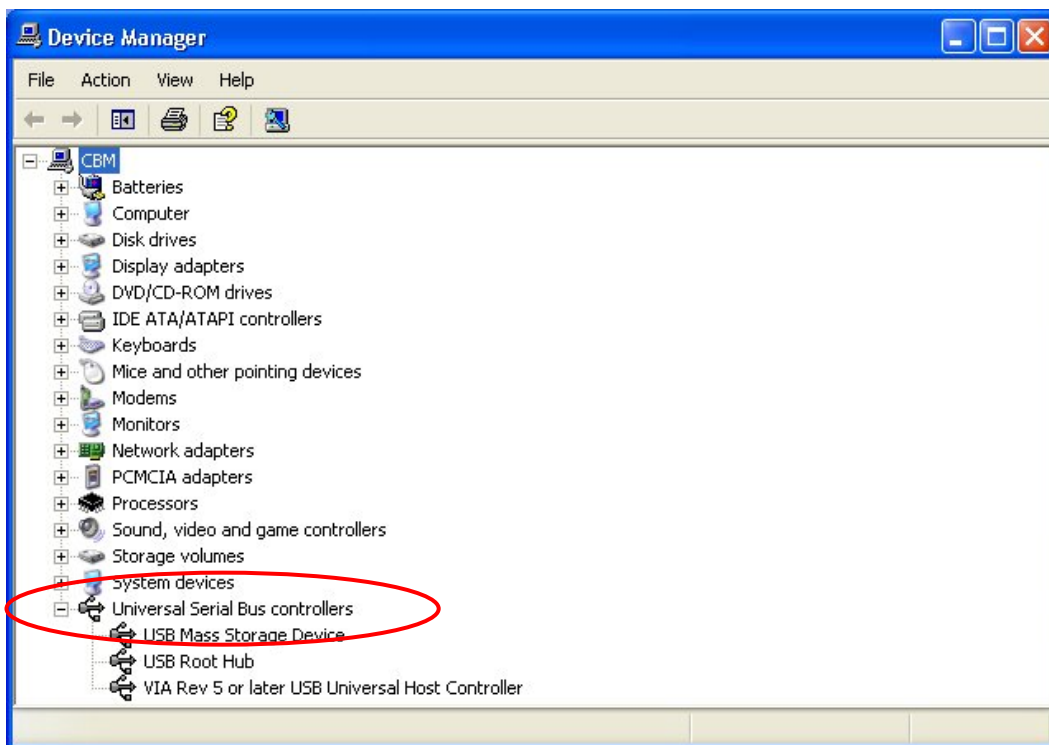
- Personal computer with any of the following Windows supporting USB

Microsoft Windows XP, 2000, 2003 Server, Vista

- USB shall be operating normally.

Make sure that “USB (Universal Serial Bus) Controller” shall be indicated on Device Manager as shown in the following figure. Without this indication, USB in your computer is not active.

If your computer has **X** or **!** on Host Controller or USB route hub under this indication, USB of your computer is not operating normally. In such a case, installing the driver may possibly be unsuccessful.



4. Installation Procedure

This driver installation guide assumes installing the driver for CT-S280 of USB model in the PC with Windows XP. Similar steps will be required for PC with other OS or other models.

Installation of the driver for CT-S280 of USB model roughly takes the following three steps.

- A. Installing USB - Serial converter
- B. Installing USB serial port
- C. Installing printer driver

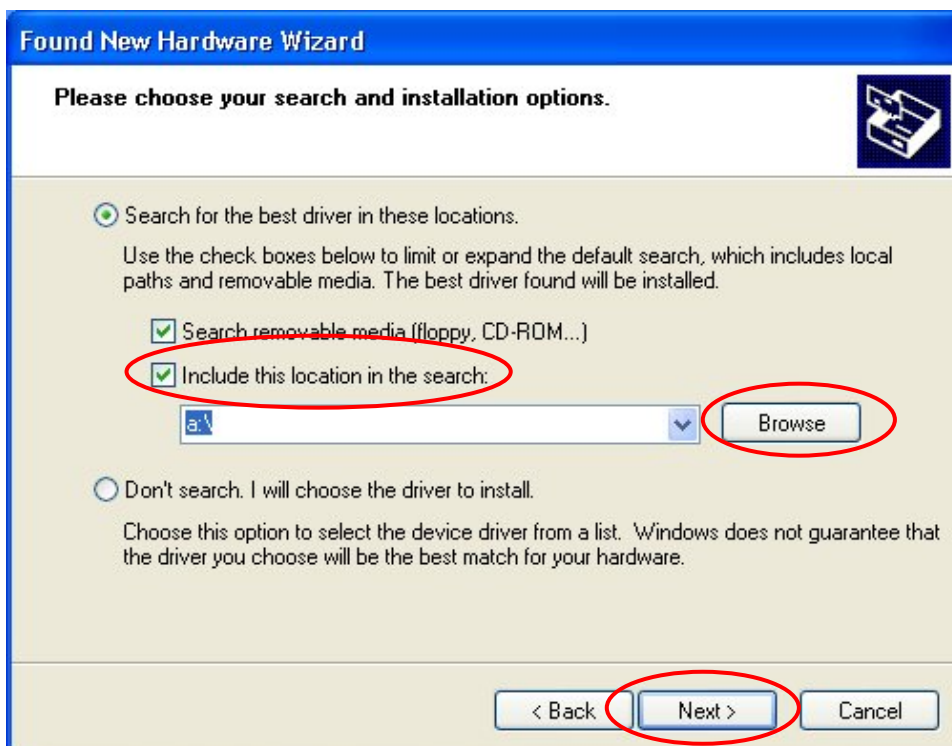
5. Installing the Driver

A. Installing USB - Serial Converter

When connecting the CT-S280 of USB interface model to a PC, the following window is displayed and installing the driver starts. Select "Install from a list or specific location" and click "Next".



The following window is displayed. Choose "Include this location in the search" and press "Browse" to specify the folder for driver file. Click "Next".



When the following message is given, press "Continue Anyway".



When the installation is completed, the following window is displayed.

This shows the completion of installing USB-Serial converter. Press "Finish".



B. Installing USB Serial Port

When installing USB - Serial Converter is completed, the following window is displayed to start installing USB serial port. Select "Install from a list or specific location." and click "Next".



When the following message is given, press "Continue Anyway".

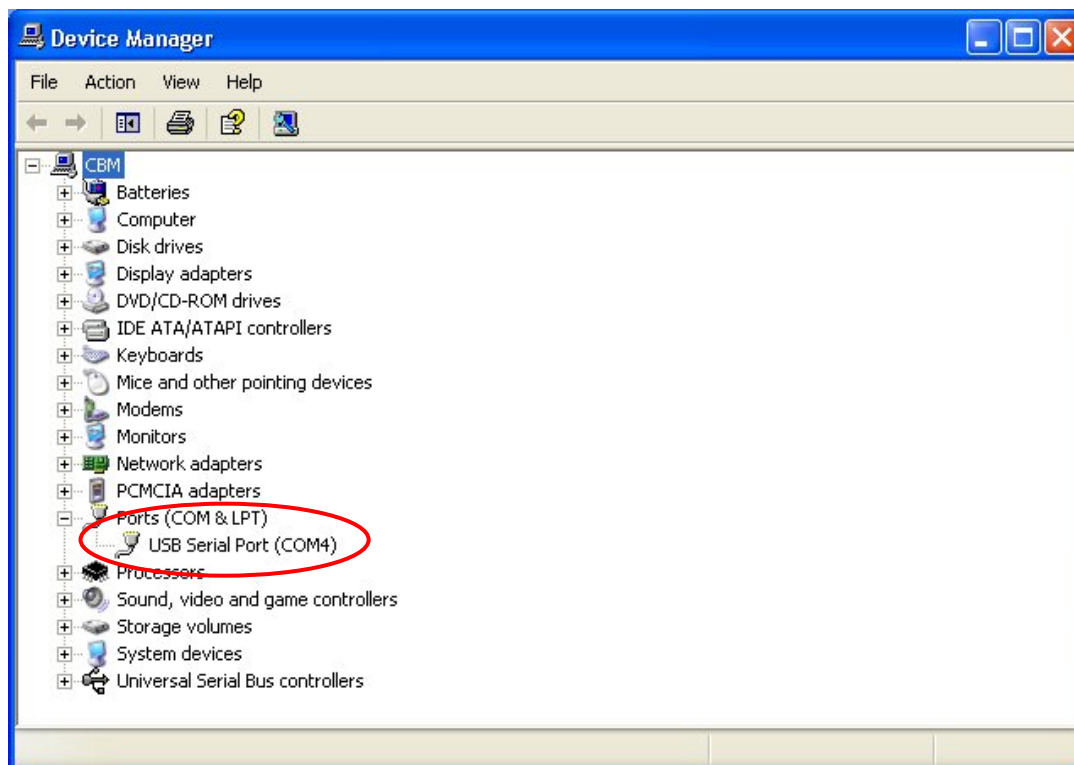


This completes the installation of USB serial port. Press “Finish” **and reboot PC.**



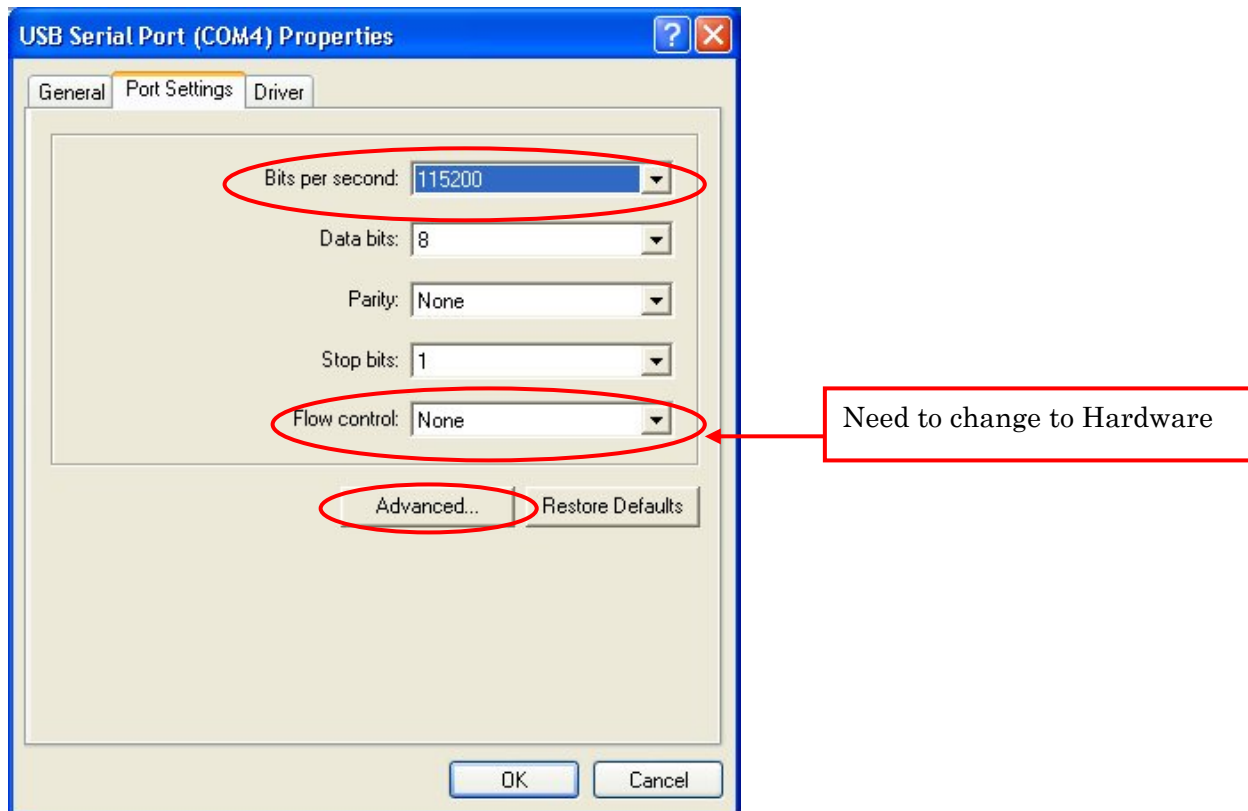
Here, let's verify the setting of the added virtual serial port.

Start Device Manager and click the port to verify that USB Serial Port has been created. Right-click on the location of USB Serial Port to select Properties.



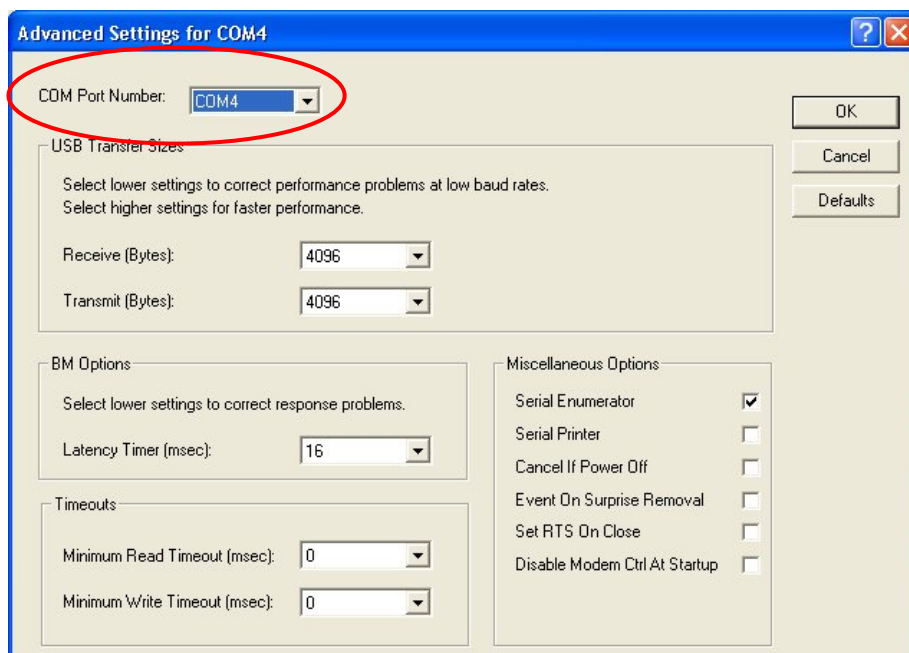
Select the tab of the port setting on the given properties window. The following window is displayed.

With the CT-S280 USB model, baud rate is 115200. Set Bits/s (baud rate) to 115200. Set Flow Control to Hardware.



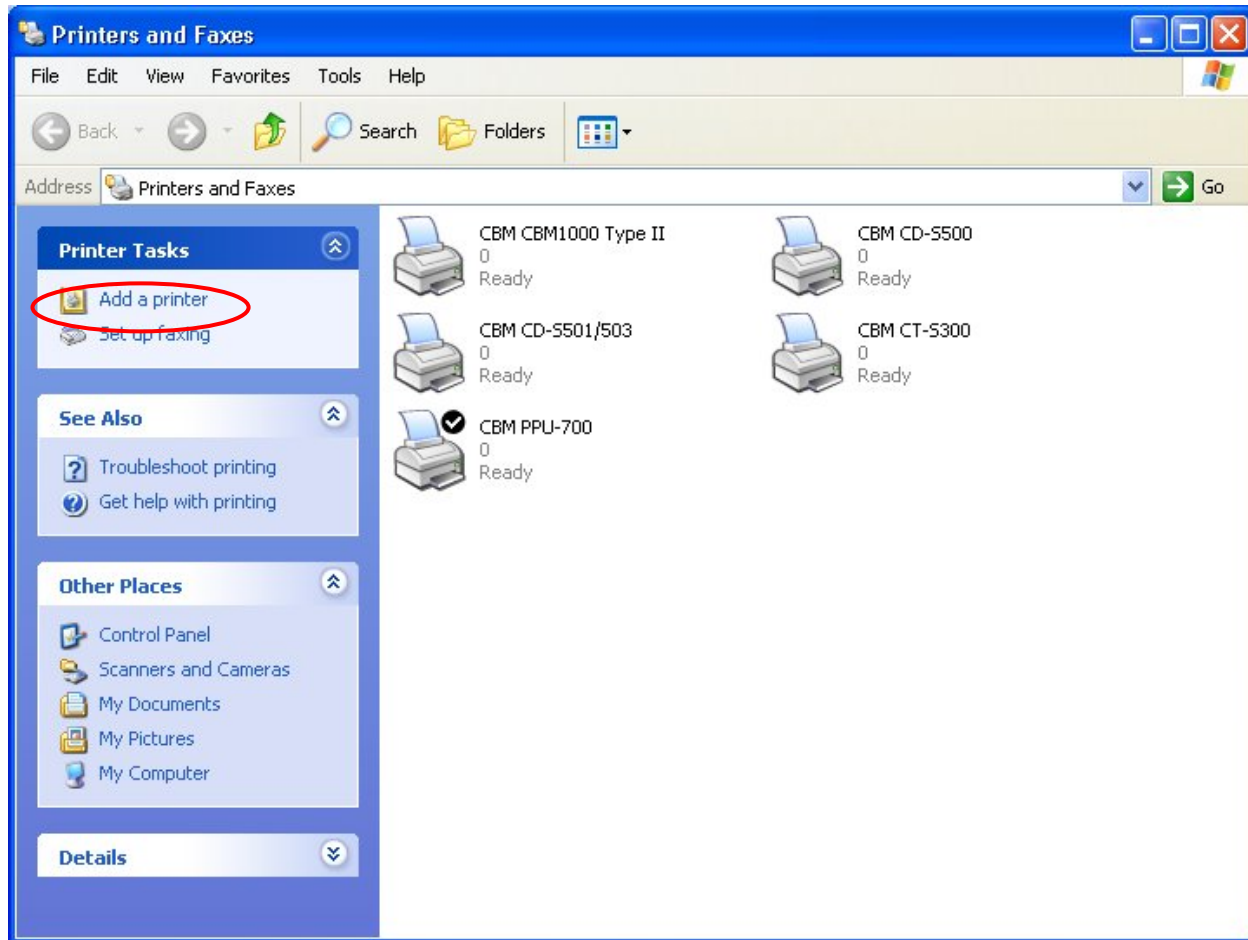
If you want to change the assigned virtual COM port number, press “Advanced” on the above window.

The following window is displayed. Select a number from COM port numbers and click “OK”.



C. Installing Printer Driver

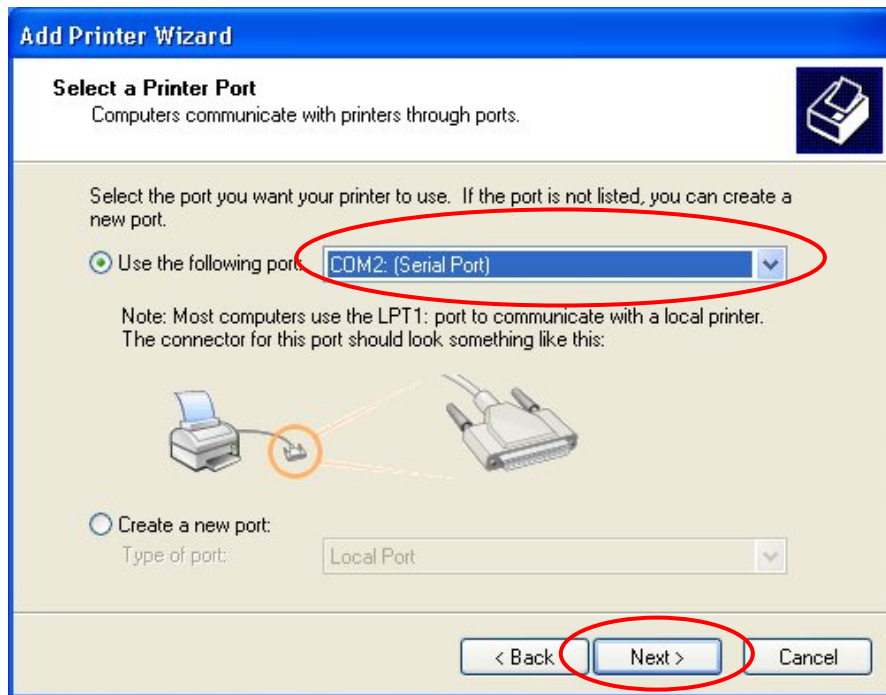
If your application software assumes the printer driver, installing the appropriate printer driver is required. Start "Printers and Faxes" and click "Add Printer".



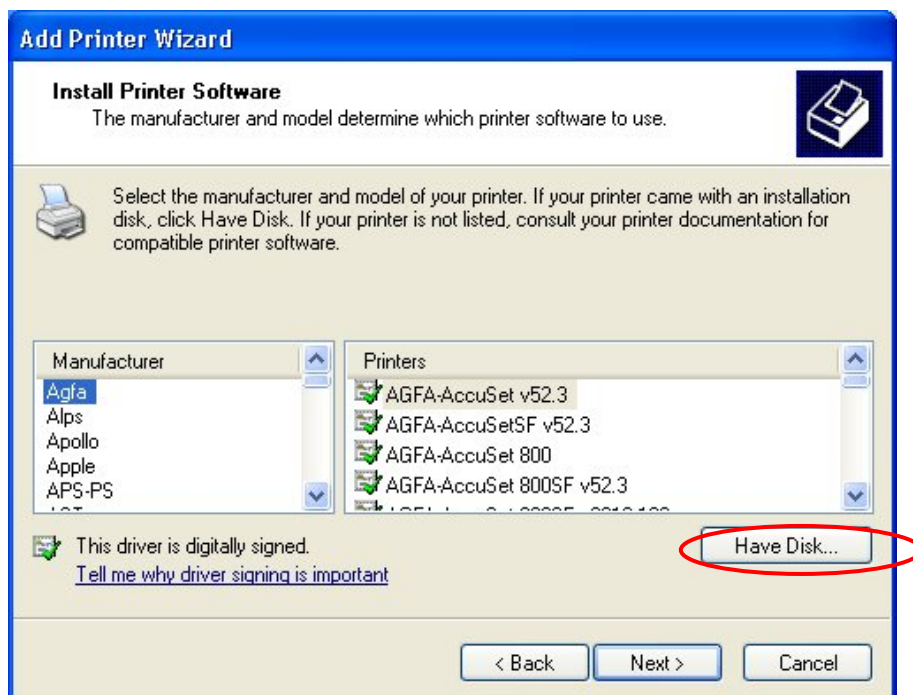
The following window is displayed. Click "Next" to start installing printer driver.



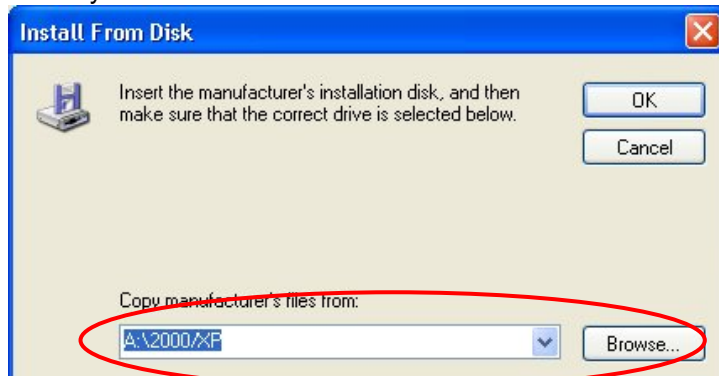
In the selection of printer port, specify the assigned virtual COM port and click "Next".



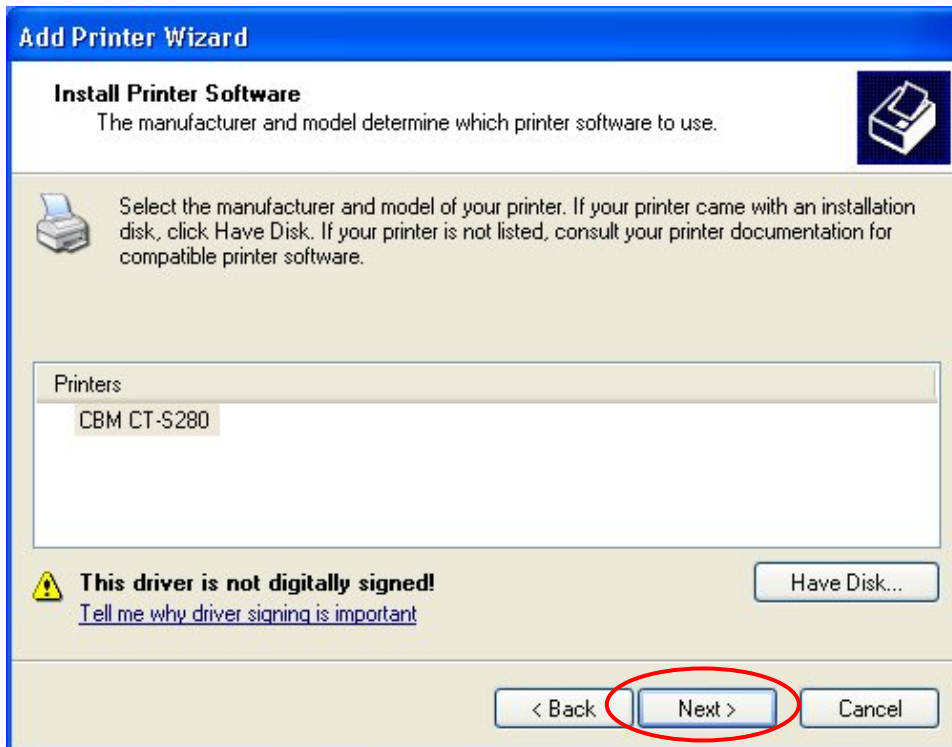
In the window of installing printer software, select "Have Disk".



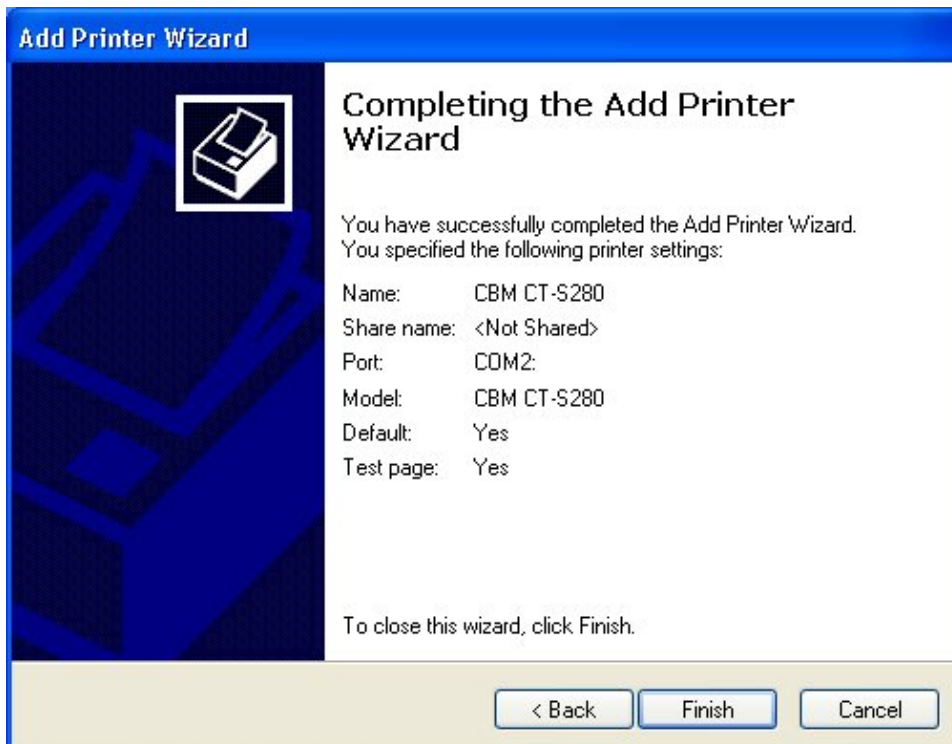
When you are asked about the location of the file containing the driver, specify the location.



When you select the printer driver for CT-S280, the following window is displayed. Press “Next”.



Following this window, click “Next” or “Continue Anyway” unless required specifically. The following window is displayed finally. This completes installing the printer driver.



6. Notes

- About USB port

If there are two or more USB connectors in your PC, connecting the USB cable from the printer to other USB connector may cause the port as another USB port. In such a case, installing a new driver may be requested. Note that if the printer is connected to the USB connector without setting of USB port assigned virtual COM port, printing is not available.

- Notes for Power On sequence

Follow the sequence of PC and then Printer when turning on PC and printer.

If two or more USB printers are connected to one PC, USB port numbers are assigned in the order of the connections. If you want to keep the USB port number assigned to virtual COM port always the same number, keep the order of power on sequence at all times.

- Power off/Unplug cable during printing

If the power is turned off or USB cable is unplugged during printing from V-COM, it takes long to recover.